

corrugated metal gasket G09

gasket spec



description

corrugated gasket with cord rope layer and inner ring.

corrugated gaskets are universally usable sealing elements. due to the different possibilities of manufacture in form of rings, ovals, oblongs or frames, which can be with or without ribs, holes and fixing loops, the field of application for these gaskets continuously expands.

the gaskets can be produced in all usual sizes up to approx. 6000 mm. smaller gaskets (up to 2000 mm are made from one piece, larger gaskets and special frames are welded from parts.

the size of corrugation is depended on dimensions of gasket. the smaller dimensions have the thickness 3 mm. the biggest dimensions have the thickness 6 mm. in the middle can be the thickness 4 or 5 mm according to dimensions.

the cord rope is on the metal part fixed by means of adhesive in the corrugation recesses. according to application is possible to use different kind of material. the corrugated gasket with cord rope has the same possibilities like with covering layers.

level of sealing surfaces

0,8 - 6,3 $\mu\text{m Ra}$

the sealing surfaces would be in a parallel way together, so as the deviation value wasn't greater then 0,4mm per all sealing surface. the sealing surfaces would be uniplanar, so as the deviation value wasn't greater then 0,2mm per width of gasket.

materials

corrugated metal part

: soft iron
stainless steel 304
stainless steel 316
stainless steel 316L
stainless steel 321
stainless steel 316Ti

covering layer

: rubber ropes : around temperature 80°C
unsintered PTFE : up to temperature 260°C, for very aggressive media and to food and pharmaceutical media
mineral fibre yarns (with or without impregnation) : temperature more then 500°C

pressure using

up to 40 Mpa, these gaskets are suitable for vacuum applications too.

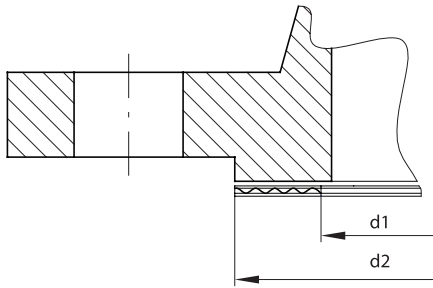
tolerances of gasket

nominal dimension		inner diameter	outer diameter
mm	inch	mm	mm
4-200	1/2-8	$\pm 0,4$	$\pm 0,8$
250-600	10-24	$\pm 0,8$	$\pm 0,8$
650-850	26-34	$\pm 0,8$	$\pm 0,8$
1500-..	36-60	$\pm 1,25$	$\pm 0,8$

tolerance of thickness +0/-0,25

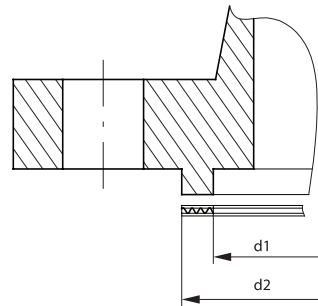


dimensions of corrugated metal gasket
according to EN1514-4 type SR - male female



Type SR		
DN	d1	d2
10	18	34
15	22	39
20	28	50
25	34	57
32	43	65
40	49	75
50	61	87
65	77	109
80	90	120
100	115	149
125	141	175
150	169	203
175	195	233
200	220	259
250	273	312
300	324	363
350	356	421
400	407	473
450	458	523
500	508	575
600	610	675
700	712	777
800	813	882
900	915	987
1000	1016	1092

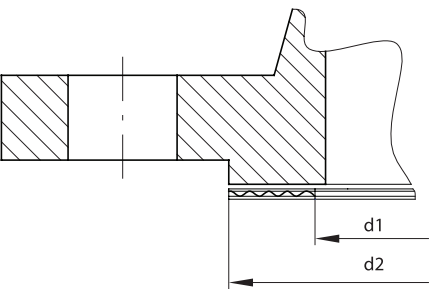
according to EN1514-4 type TG - tongue groove



Type TG		
DN	d1	d2
4-6	20	30
8	22	32
10	24	34
15	29	39
20	36	50
25	43	57
32	51	65
40	61	75
50	73	87
65	95	109
80	106	120
100	129	149
125	155	175
150	183	203
175	213	233
200	239	259
250	292	312
300	343	363
350	395	421
400	447	473
450	497	523
500	549	575
600	649	675
700	751	777
800	856	882
900	961	987
1000	1062	1092

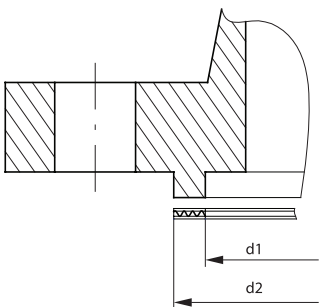


according to ASME B16.5 male female



ASME B16.5		
Type SR		
DN	d1	d2
1/2"	21	35
3/4"	27	43
1"	33	51
1 1/4"	42	63
1 1/2"	48	73
2"	60	92
2 1/2"	73	105
3"	89	127
4"	114	157
5"	141	186
6"	168	216
8"	219	270
10"	273	324
12"	324	381
14"	356	413
16"	406	470
18"	457	533
20"	508	584
24"	610	692

according to ASME B16.5 tongue groove



ASME B16.5		
Type TG		
DN	d1	d2
1/2"	26	35
3/4"	34	43
1"	38	51
1 1/4"	48	64
1 1/2"	54	73
2"	73	92
2 1/2"	86	105
3"	108	127
4"	132	157
5"	160	186
6"	190	216
8"	238	270
10"	286	324
12"	343	381
14"	374	413
16"	424	470
18"	489	533
20"	534	584
24"	642	692